

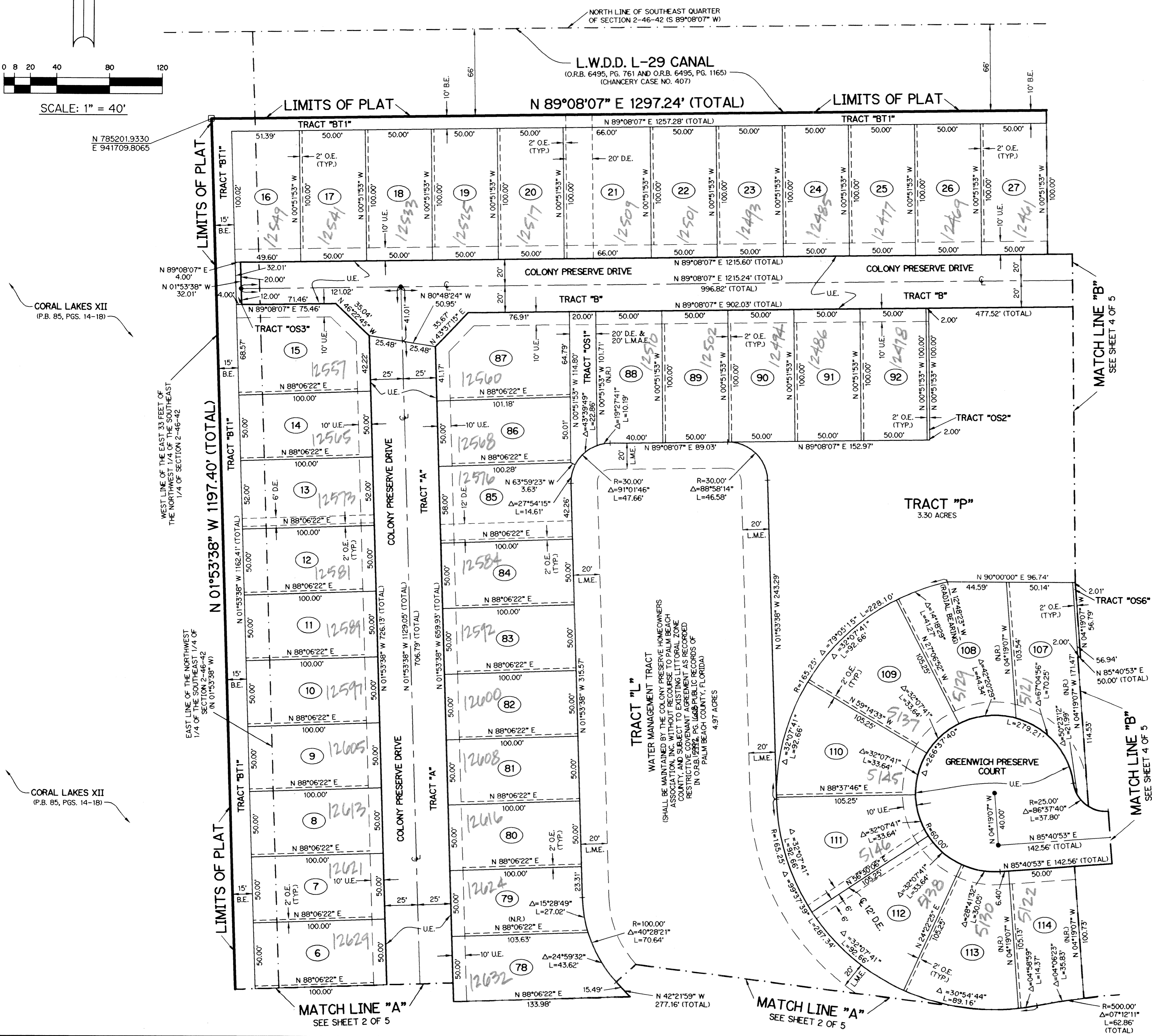
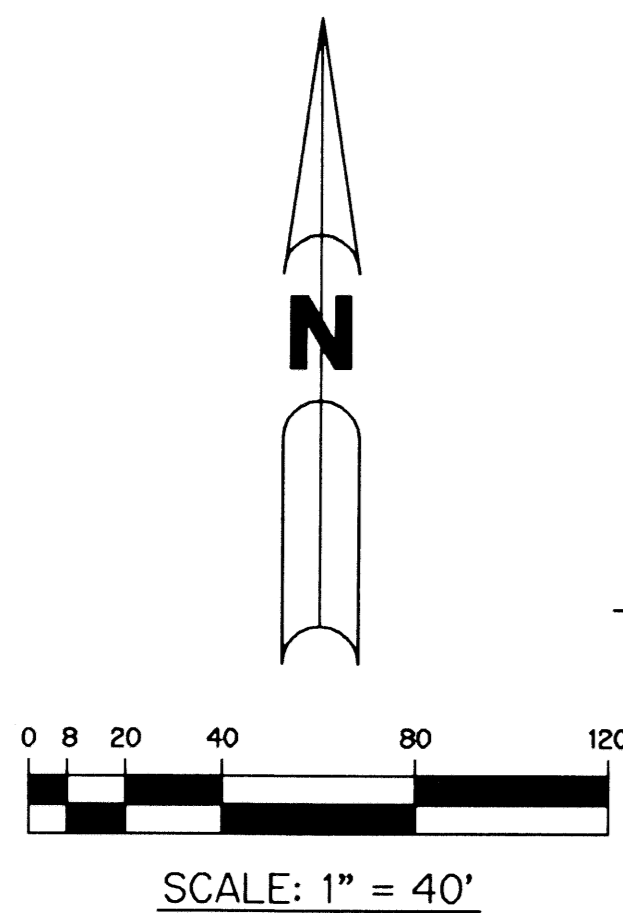
COLONY PRESERVE, P.U.D.

A PARCEL OF LAND LYING AND BEING WITHIN THE NORTHEAST QUARTER (N.E. 1/4)
OF THE SOUTHEAST QUARTER (S.E. 1/4) OF SECTION 2, TOWNSHIP 46 SOUTH,
RANGE 42 EAST, PALM BEACH COUNTY, FLORIDA

SHEET 3 OF 5 APRIL, 2003

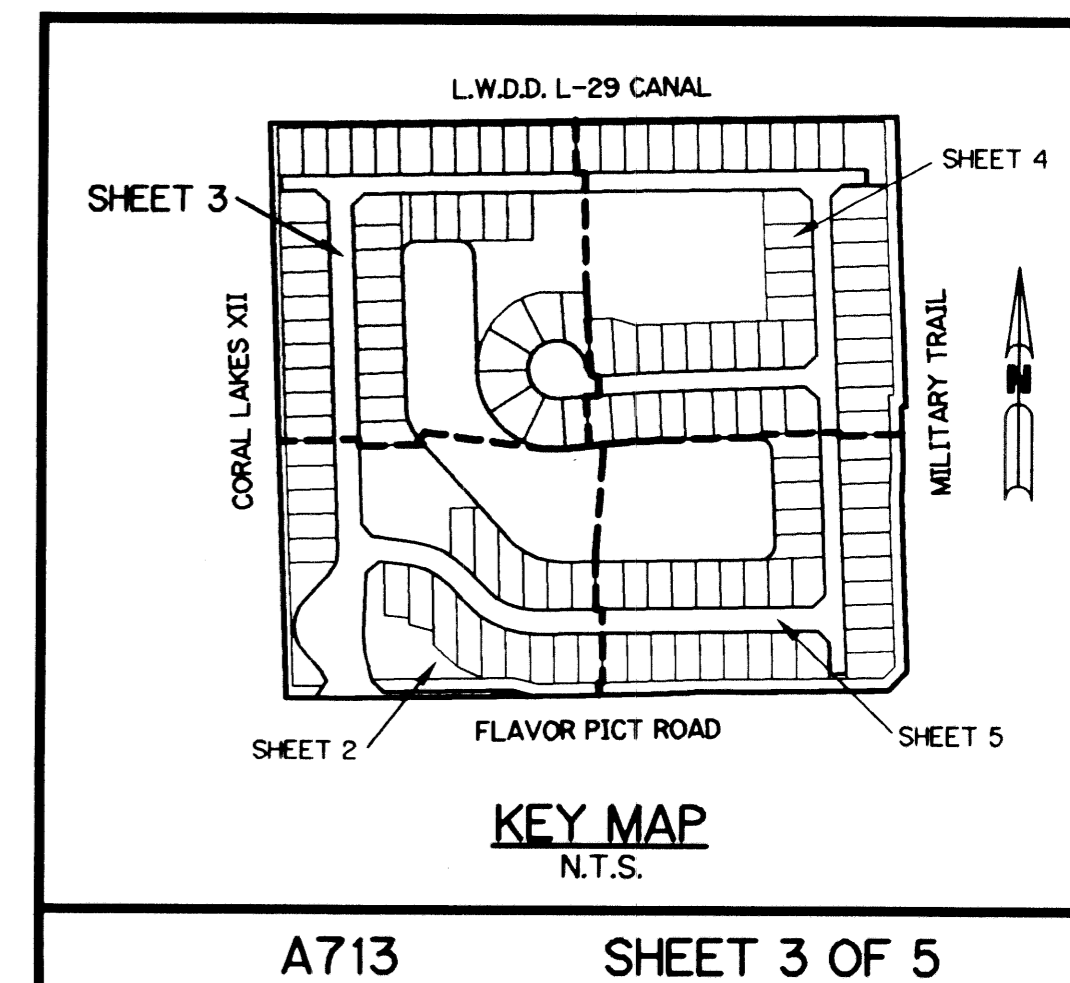
THIS INSTRUMENT PREPARED BY
WILBUR F. DIVINE, P.S.M. 4190, STATE OF FLORIDA
LAWSON, NOBLE AND WEBB, INC.
ENGINEERS PLANNERS SURVEYORS
420 COLUMBIA DRIVE
WEST PALM BEACH, FLORIDA 33409
LB-6674

21



- LEGEND:**
- - SET PERMANENT REFERENCE MONUMENT, L.B. #6674
 - - FOUND PERMANENT REFERENCE MONUMENT, L.B. #6674
 - - SET PERMANENT CONTROL POINT, L.B. #6674
 - Δ - DELTA ANGLE
 - B.E. - BUFFER EASEMENT
 - CB - CHORD BEARING
 - CH - CHORD DISTANCE
 - C - CENTERLINE
 - D.B. - DEED BOOK
 - D.E. - DRAINAGE EASEMENT
 - GD. - GROUND
 - L - ARC LENGTH
 - L.E. - LANDSCAPE EASEMENT
 - L.A.E. - LIMITED ACCESS EASEMENT
 - L.M.A.E. - LAKE MAINTENANCE ACCESS EASEMENT
 - L.M.E. - LAKE MAINTENANCE EASEMENT
 - L.W.D.D. - LAKE WORTH DRAINAGE DISTRICT
 - N.R. - NOT RADIAL
 - N.T.S. - NOT TO SCALE
 - O.E. - OVERHANG EASEMENT
 - O.R.B. - OFFICIAL RECORD BOOK
 - P.A.E. - PEDESTRIAN ACCESS EASEMENT
 - P.B. - PLAT BOOK
 - P.C. - POINT OF CURVATURE
 - P.C.P. - PERMANENT CONTROL POINT
 - PGS. - PAGES
 - P.O.B. - POINT OF BEGINNING
 - P.O.C. - POINT OF COMMENCEMENT
 - P.S.M. - PROFESSIONAL SURVEYOR AND MAPPER
 - P.T. - POINT OF TANGENCY
 - R - RADIUS
 - RAD. - RADIAL
 - R/W - RIGHT-OF-WAY
 - TYP. - TYPICAL
 - U.E. - UTILITY EASEMENT

NOTE:
COORDINATES SHOWN ARE GRID COORDINATES
DATUM = NAD 83 (1990 ADJUSTMENT)
ZONE = FLORIDA EAST ZONE
LINEAR UNIT = U.S. SURVEY FEET
COORDINATE SYSTEM = 1983 STATE PLANE
TRANSVERSE MERCATOR PROJECTION
ALL DISTANCES ARE GROUND
SCALE FACTOR = 1.0000351
PLAT BEARING = GRID BEARING
NO ROTATION



STREETS: COLONY PRESERVE PUD
BLOCK: 101 PAGE: 21
FLOOD ZONE: B FLOOD MAP # 2054
ZONING: PUD
QUAD: # 36
ZIP CODE: 33440
TAZ: 455
PUD NAME: COLONY PRESERVE

CORAL LAKES XII
(P.B. 85, PGS. 14-18)

WEST LINE OF THE EAST 33 FEET OF
THE NORTHWEST 1/4 OF THE SOUTHEAST
1/4 OF SECTION 2-46-42

EAST LINE OF THE NORTHWEST
1/4 OF THE SOUTHEAST 1/4 OF
SECTION 2-46-42

TRACT "L"
WATER MANAGEMENT TRACT
(SHALL BE MAINTAINED BY THE COLONY PRESERVE HOMEOWNERS
ASSOCIATION, INC. WITHOUT RECOURSE TO PALM BEACH
COUNTY, AND SUBJECT TO EXISTING LITTORAL ZONE
RESTRICTIVE COVENANTS AND PUBLIC RECORDS OF
PALM BEACH COUNTY, FLORIDA)
4.97 ACRES

TRACT "P"
3.30 ACRES

MATCH LINE "A"
SEE SHEET 2 OF 5

MATCH LINE "A"
SEE SHEET 2 OF 5

MATCH LINE "B"
SEE SHEET 4 OF 5

MATCH LINE "B"
SEE SHEET 4 OF 5